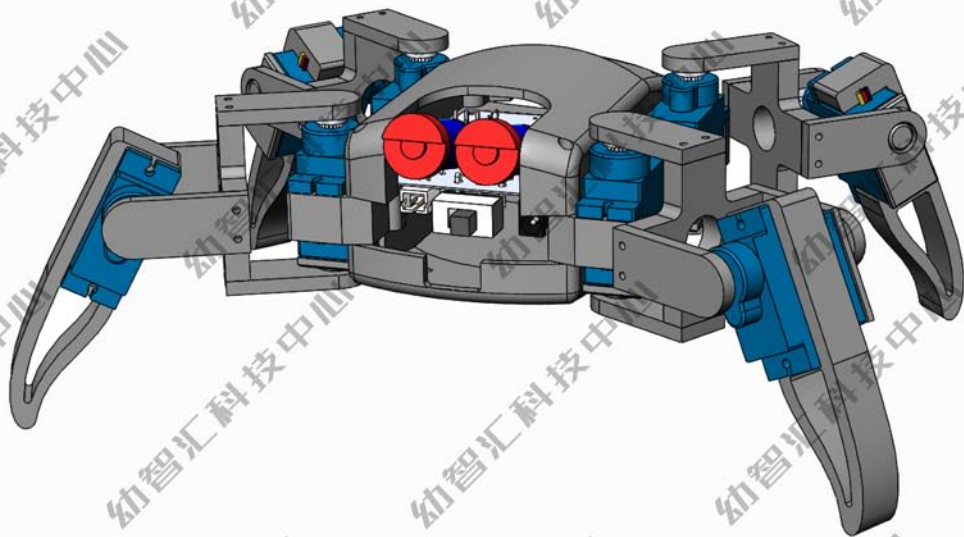
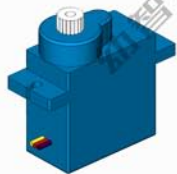
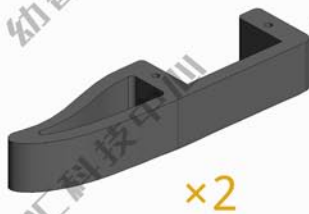
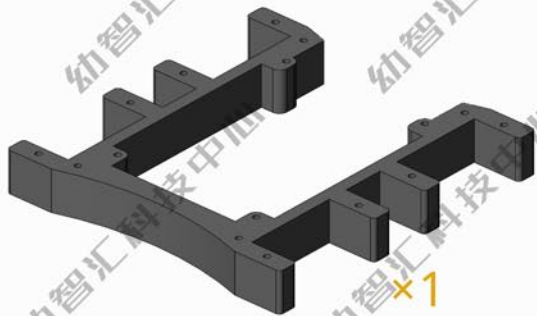
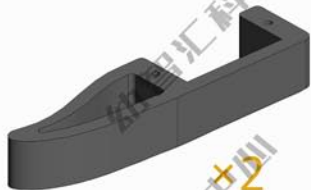
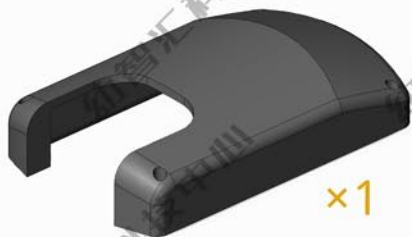


小蜘蛛

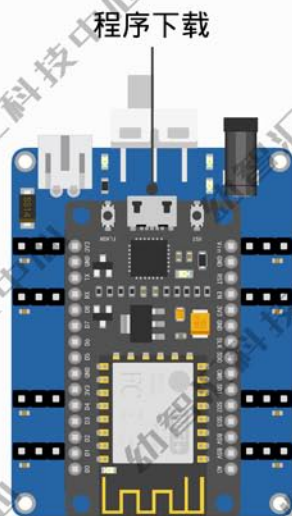
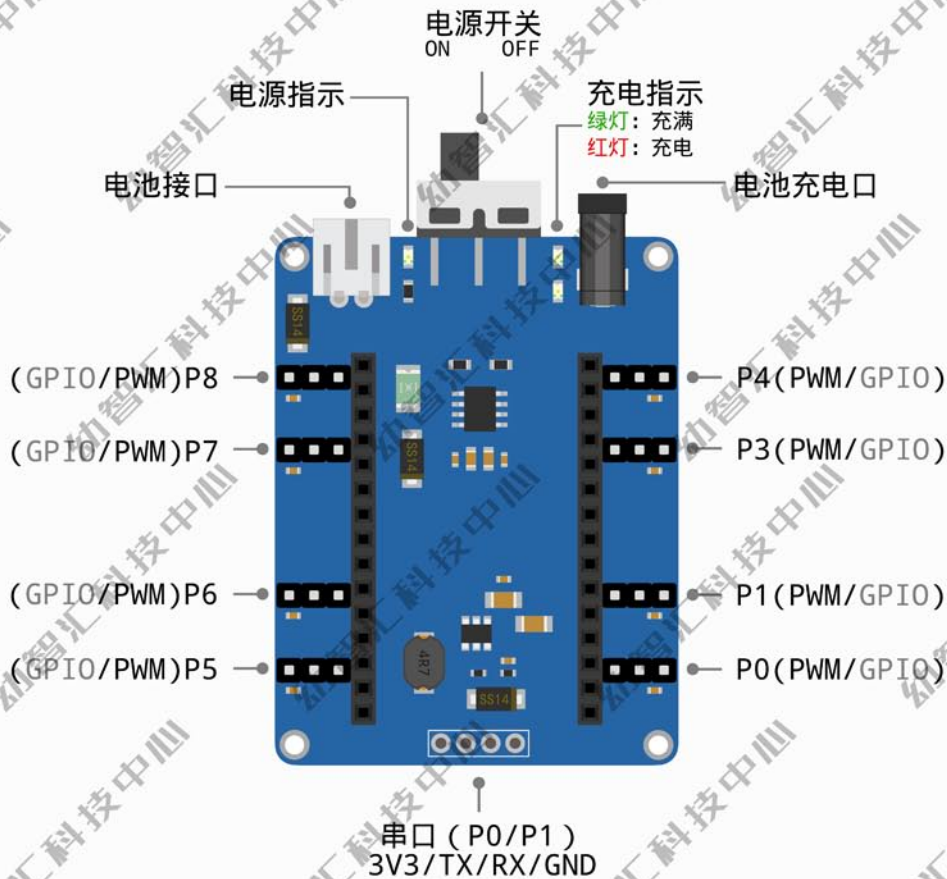
一个可以边学边玩的四足机器人



配件

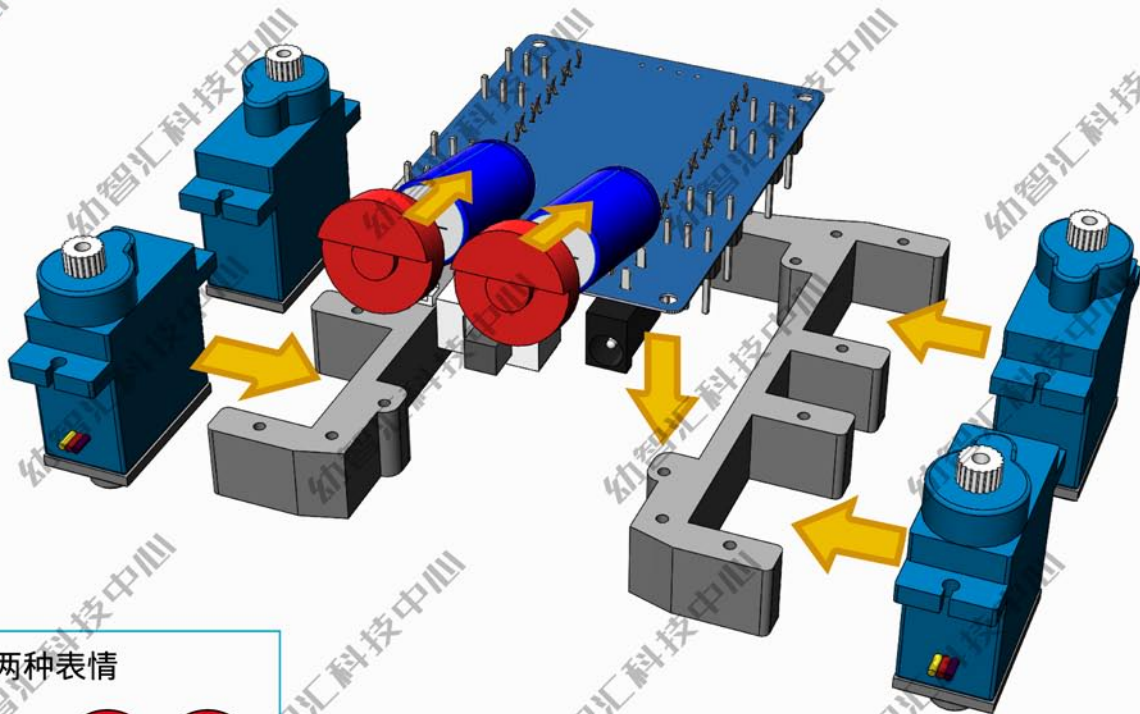


板卡说明

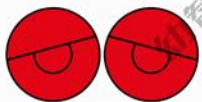


01

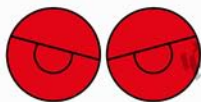
安装舵机、主板和眼睛



另外两种表情



忧郁

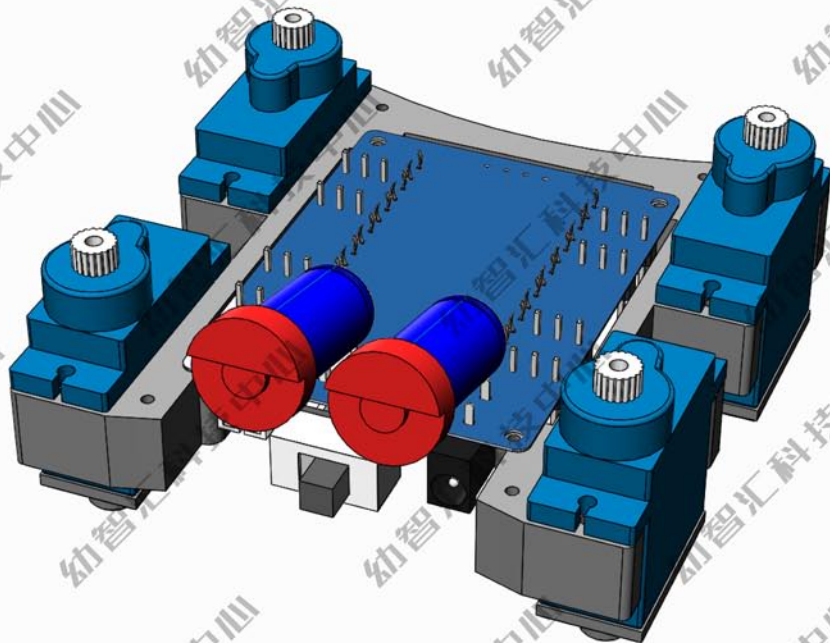


愤怒

02

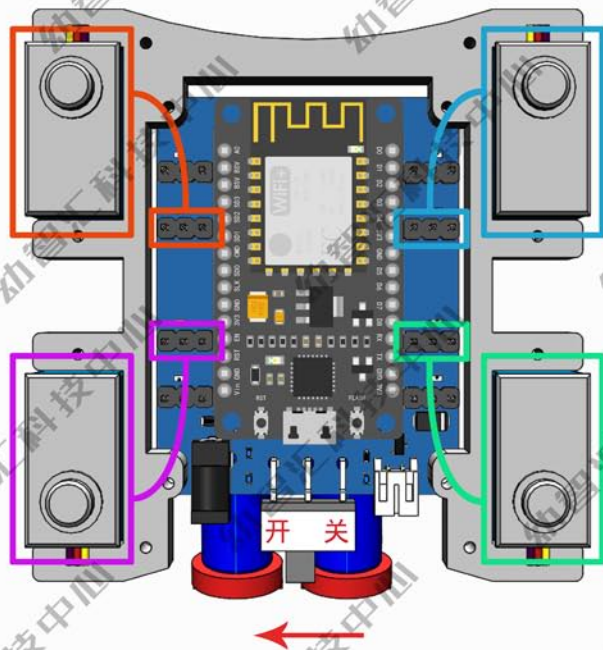
用螺丝固定舵机和主板

M1.7×8mm螺丝
×12



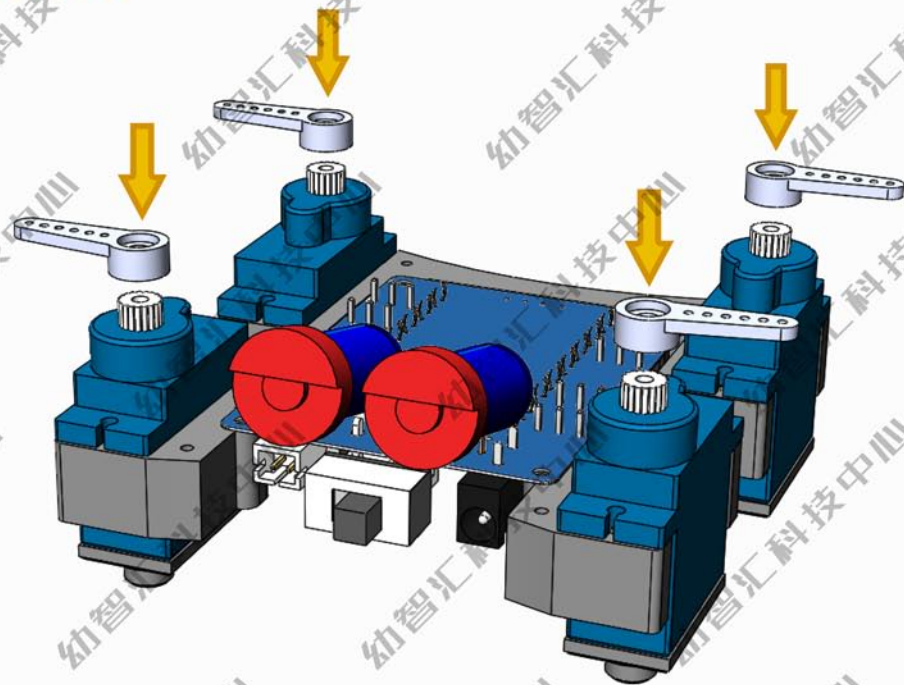
03

将舵机连接到主板后通电(让舵机自动归位)



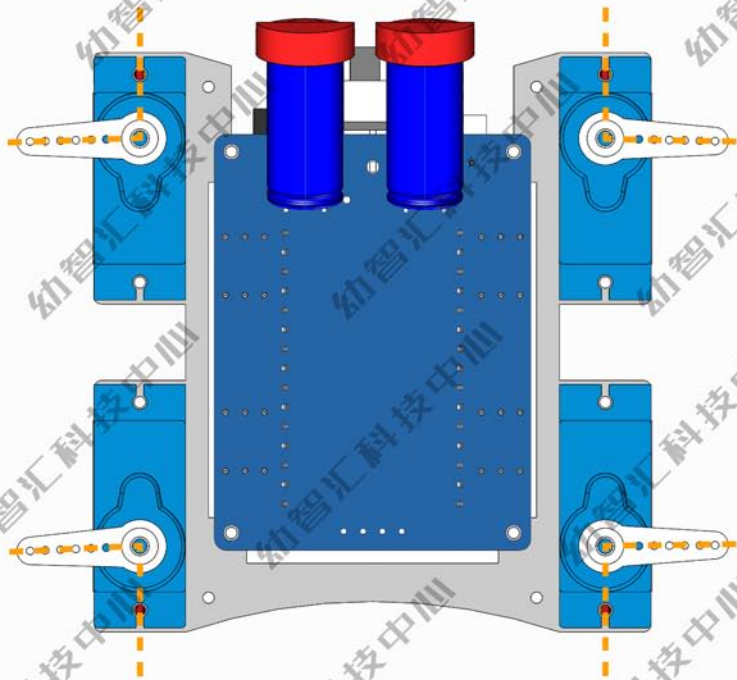
04

安装舵臂



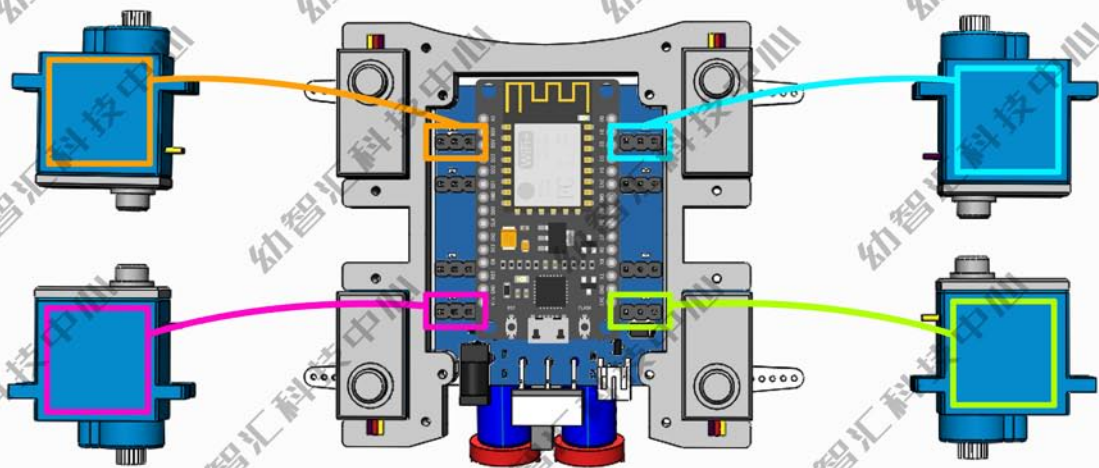
05

舵臂与舵机垂直



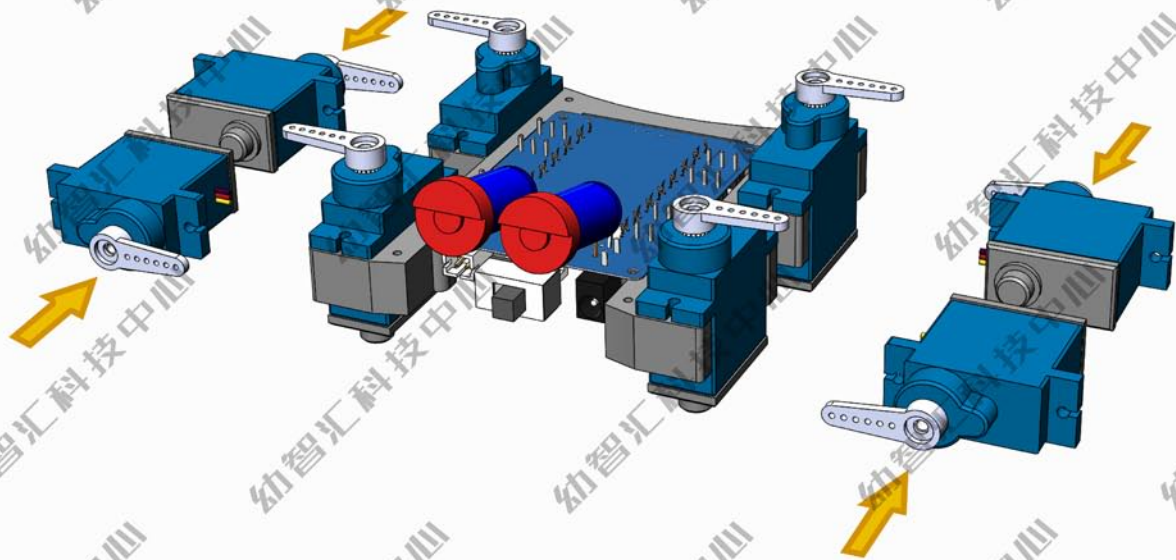
06

将舵机连接到主板后通电(让舵机自动归位)



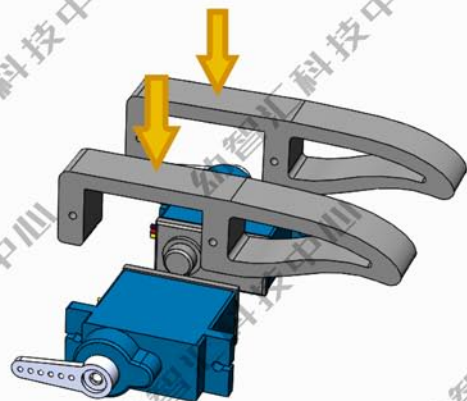
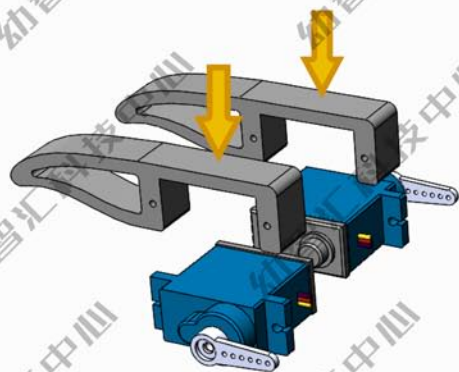
07

安装舵臂



08

安装四足

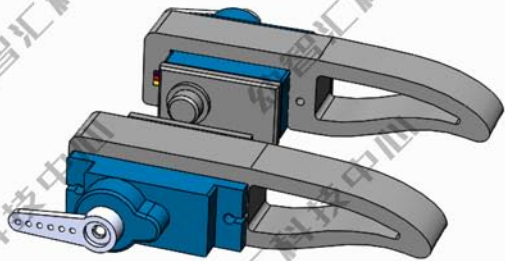
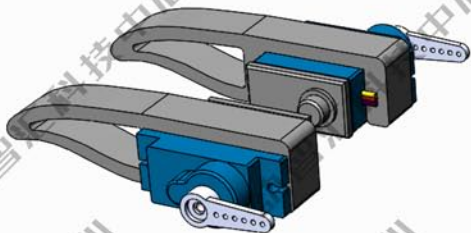


09

用螺丝固定舵机

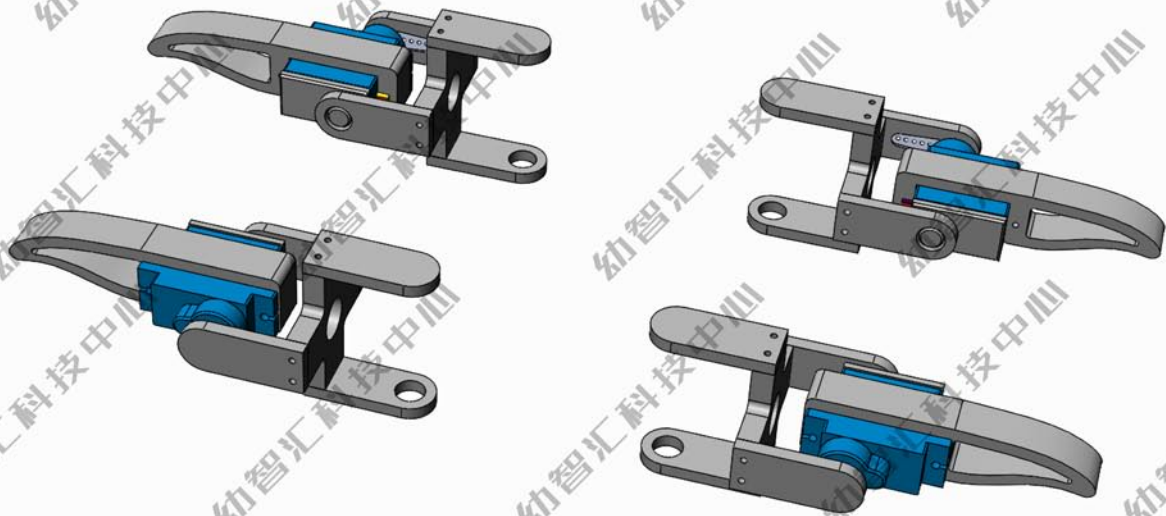


M1.7×8mm螺丝
×8



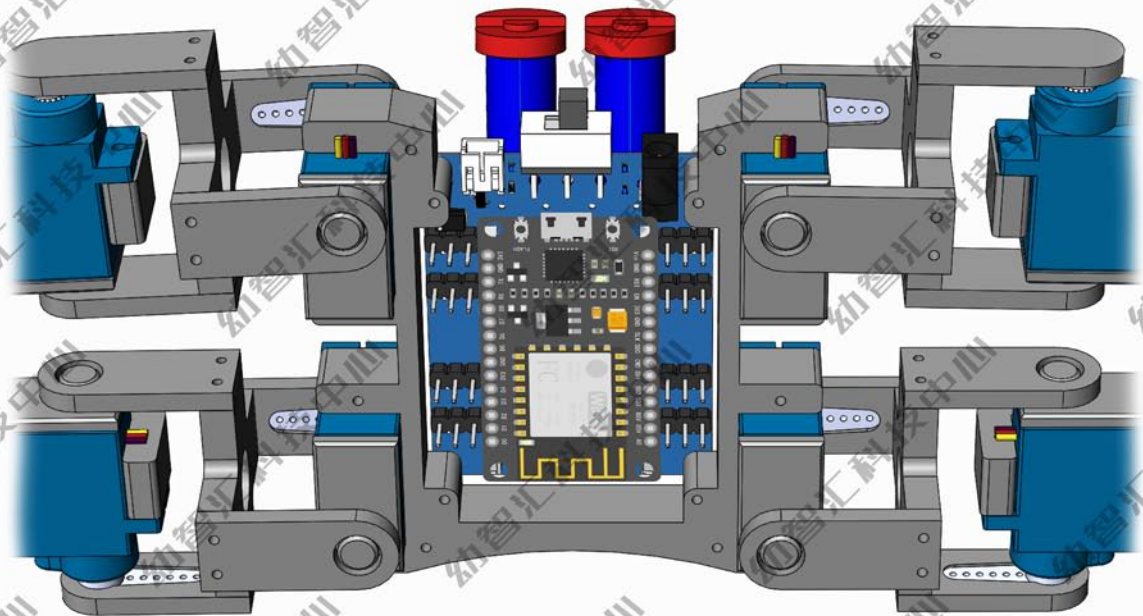
10

安装连接件

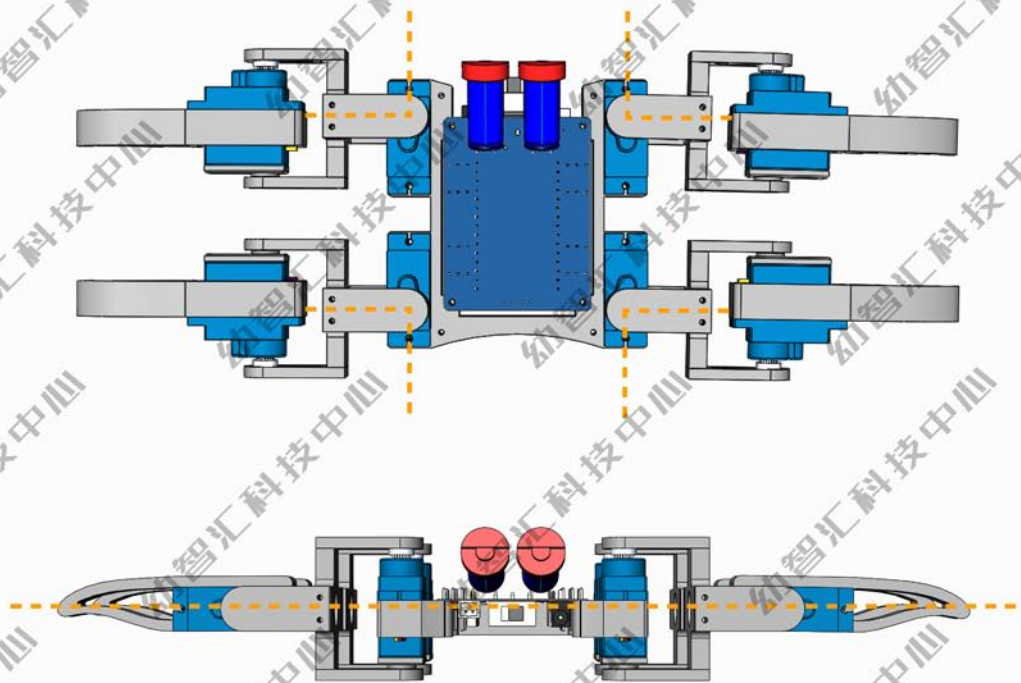


11

安装连接件

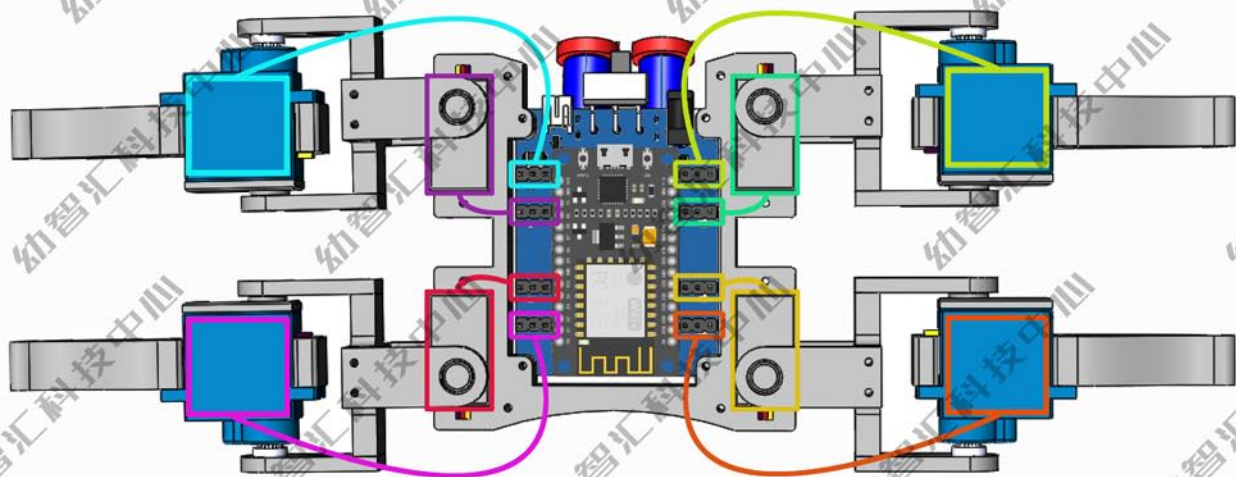


12



13

连接舵机到主板

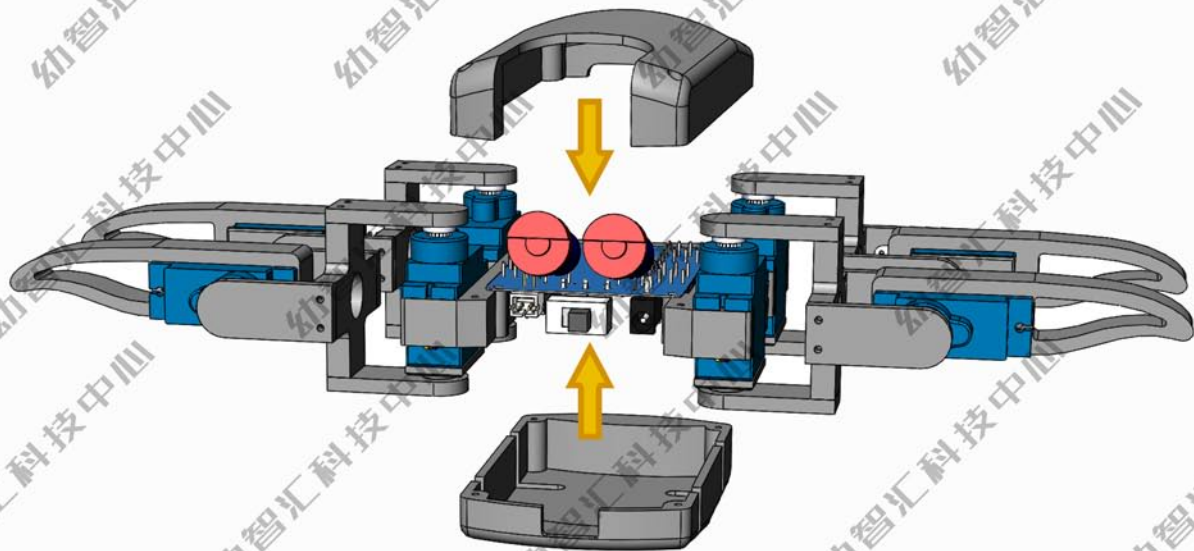


14

安装外壳



M1.7×8mm螺丝
×8



15

组装完成！

